

CLEVELAND KEL-T SERIES

ELECTRIC FLOOR MOUNTED KETTLES

Electric, self contained, tilting kettle with worm drive tilt mechanism and 100lt, 150lt, 225lt capacity, 2/3 jacketed. Solid state controls for accurate temperature control ($\pm 1^{\circ}\text{C}$) and low water safety. All exterior surfaces are stainless steel.

Model: **KEL-25T (100lt capacity)**
KEL-40T (150lt capacity)
KEL-60T (225lt capacity)



STANDARD FEATURES

- Splash proof element cover with a double gasket seal
- Water resistant controls, splash-proof construction
- 50 psi steam jacket rating for higher cooking temperatures
- Self-contained, easily installed - needs only an electrical hook-up
- Steam jacket filled with treated water, venting and/or refilling is not required
- Re-inforced rolled rim design prevents damage to kettle rim, eliminates "bar rim designs"
- Welded-in heating elements, (holds vacuum better, won't leak or loose water)
- Easily cleaned: kettle and all exterior surfaces are of type 304 stainless steel with an #4 finish
- Solid state water level control (no sight glass gauge to break or leak)
- Tilt mechanism of roller bearings and case hardened self-locking worm and segment gear
- 1 5/8" O.D. tri-leg supports with level adjustable feet for floor bolting
- Accurate, constant solid state temperature controls (mechanical thermostat not as accurate) - less than $\pm 1^{\circ}\text{C}$ variance (ideal for simmering). Operating temperature range from 145° - 260°F (63°C - 127°C) Control panel includes: LED indicator for heat cycle, LED indicator for low water, Power ON/OFF switch • Adjustable temperature control dial
- Rear mounted easy access pressure gauge and pressure relief valve to prevent tampering. Color coded easy to read pressure gauge with "green" and "vent air zone"
- Large pouring lip for high capacity and chunky products
- 50 psi safety valve

OPTIONAL FEATURES

- Pan Carrier (PCK)
- Food Strainers (FS)
- Kettle Accessory Kit (KAK) includes:
 - Clean-up Brush (CB) - 914mm Kettle Paddle (KP)
 - 914mm Kettle Whip (KW) - 914mm Kettle Brush
 - Draw-Off Brush (DB) - 24 oz. Ladle (KL)
- Measuring Strip (MS)
- Swing Funnels for drain (SW)
- Heat Deflector Shield (HS001)
- Spring-assisted, hinged, rotatable, domed Stainless Steel Cover (CHS)
- 51mm or 76mm diameter Tangent Draw-Off Valve (TD2 or TD3*), *TD3 for 225 Lt. only and will raise height of kettle by 143mm
- Hot and Cold Water Faucet with Swing Spout and Mounting Bracket (DPK and FBKT)
- Type 316 Stainless Steel Kettle Liner for high acid food products (316)
- Flow Diverter (FD)
- Cooking Baskets and Tri-Basket Supports (BS and TBS)
- Automatic Water Meter (GMF or LMF)
- Drain Strainers (DS-)
- Water Meter Stand (SWM)
- Lift-Off Covers (CL)
- Gallon Markings (KM)
- Alternate Mounting Systems
- Correctional Packages

SPECIFICATIONS ARE SUBJECT TO CHANGE WITHOUT NOTICE.

From the world of Comcater!

National Head Office
 156 Swann Drive
 Derrimut VIC 3030
 Tel: +61 3 8369 4600
 Fax: +61 3 8369 4695

Melbourne
 96-100 Tope Street,
 South Melbourne VIC 3205
 Tel: +61 3 8369 4600
 Fax: +61 2 8699 1299

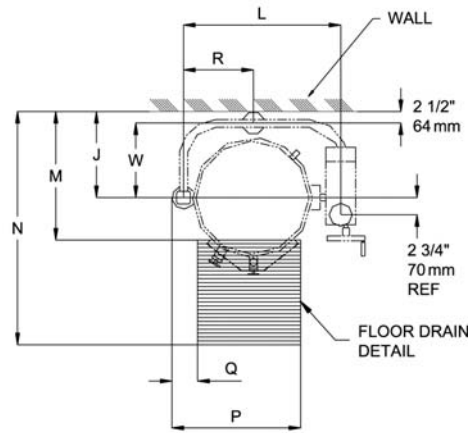
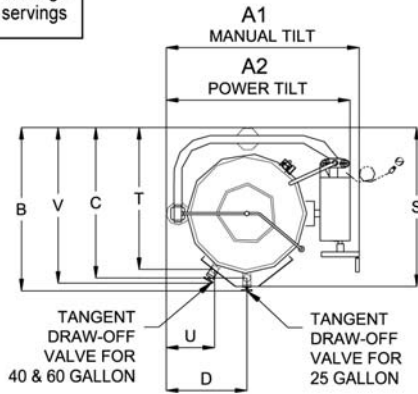
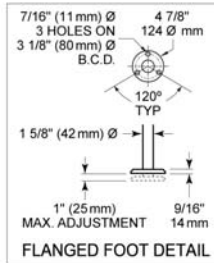
Sydney
 20/4 Avenue of the Americas
 Newington, NSW 2127
 Tel: +61 2 9748 3000
 Fax: +61 2 9 648 4762

Brisbane
 1/62 Borthwick Avenue
 Murarrie QLD 4172
 Tel: +61 7 3399 3122
 Fax: +61 7 3399 5311

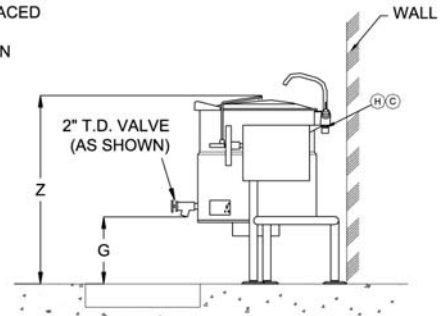
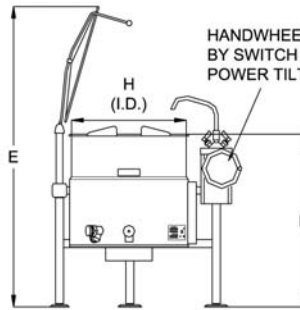
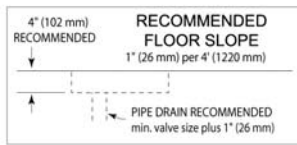
CLEVELAND KEL-T SERIES



CAPACITIES: (in 8 oz. servings, other sizes may be calculated)
 25 Gallon / 100 liters ... 400 servings
 40 Gallon / 150 liters ... 640 servings
 60 Gallon / 225 liters ... 960 servings



NOTE: TD3, 3" tangent draw off will raise height of kettle by 5-5/8" (143mm). Available on 60 gallon models only.



KETTLE SHOWN WITH OPTIONAL SPRING ASSIST COVER, WATER FAUCET AND T.D. VALVE

DIMENSIONS (mm)

Lt.	A1	A2	B	C	D	E	F	G	H	J	L	M	N	P	Q	R	S	T	U	V	W	Z
100	928	794	858	759	394	1594	953	372	534	432	731	586	1315	610	102	366	788	-	-	-	369	1045
150	1055	1001	-	-	-	1740	1004	347	661	508	858	661	1423	724	140	428	959	864	140	943	445	1080
225	1143	1090	-	-	-	1925	1080	359	750	547	947	756	1588	788	140	472	1045	940	197	975	483	1191

TECHNICAL DATA

Power Supply	415V, 3 Phase, 16.7 amp (KEL-25T) 415V, 3 Phase, 25.1amp (KEL-40T) 415V, 3 Phase, 25.1 amp (KEL-60T)
Energy Rating	13kW (KEL-25T) 19.6kW (KEL-40T) 19.6kW (KEL-60T)

SPECIFICATIONS ARE SUBJECT TO CHANGE WITHOUT NOTICE.



www.comcater.com.au

PROUDLY DISTRIBUTED BY: